

# Sambujō (三奉請)

(Three Respectful Callings)

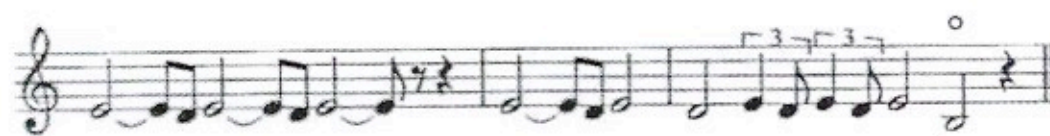


Leader  
Bu jo - u    1. mi\_\_\_\_\_ da\_\_\_\_\_ nyo ra - i  
                  2. sha\_\_\_\_\_ ka\_\_\_\_\_

3. jip\_\_\_\_\_ pō\_\_\_\_\_



All  
ni - u\_\_\_\_ do - u    jo\_\_\_\_\_ u    Sa - n ge - e



ra\_\_\_\_\_ a\_\_\_\_\_ a\_\_\_\_\_ ku

ぶ じょう み だ にょ らい にう どう じょう さん げ らく  
奉 請 弥 陀 如 来 入 道 場 散 華 樂  
ぶ じょう しゃ か にょ らい にう どう じょう さん げ らく  
奉 請 釈 迦 如 来 入 道 場 散 華 樂  
ぶ じょう じっ ぼう にょ らい にう どう じょう さん げ らく  
奉 請 十 方 如 来 入 道 場 散 華 樂

We respectfully welcome Amida Buddha to our temple as we scatter flowers of joy.

We respectfully welcome Śākyamuni Buddha to our temple as we scatter flowers of joy.

We respectfully welcome the Buddhas of all times and places to our temple as we scatter flowers of joy.

## Three Treasures

*Leader:*

How rare and wondrous it is to have been born into human life, and now I live it. How rare and wondrous it is to be able to listen to the Buddha-Dharma, and now I am able to hear it. If I do not transcend the world of delusion in this life, when will I ever attain spiritual liberation? May I, along with the entire Sangha, with sincere heart and mind, rely on that which can be truly relied on in life – the Three Treasures.

*All:*

I rely on the Buddha. May I, along with all sentient beings, awakened to the Great Path with my entire being and discover the highest aspiration, which is to become a Buddha.

I rely on the Dharma. May I, along with all sentient beings, deeply reflect on the meaning of the sutras and gain wisdom that is as deep and vast as the ocean.

I rely on the Sangha. May I, along with all sentient beings, become one Sangha of life, able to move forward and live with a dynamic spirit that is hindered by nothing.

*Leader:*

The unsurpassed, deep, and wondrous Dharma, even in millions of kalpas, is extremely difficult to encounter, but now I am able to experience and embrace it. May I come to understand and revere the true meaning of the Tathāgata.

## Shōshinge (正信偈)

Gyō-fu (行譜)



2.  
To ken sho butsu jō do in  
Koku do nin den shi zen maku  
Kon ryū mu jō shu shō gan  
Chō hotsu ke-u dai gu ze

3.  
Go kō shi yui shi shō ju  
Jū sei myō shō mon jip-pō  
Fu hō mu ryō mu hen kō  
Mu ge mu tai kō en nō

4.  
Shō jō kan gi chi e kō  
Fu dan nan ji mu shō kō  
Chō nichī gakkō shō jin setsu  
Is-sai gunjō mu kō shō

5.  
Hon gan myō gō shō jō gō  
Shi shin shin gyō gan ni in  
Jō tō gaku shō dai ne han  
His-shi metsu do gan jō ju

6.  
Nyo rai sho-i kō shus-se  
Yui setsu mi da hon gan kai  
Go joku aku ji gun jō kai  
Ō shin nyo rai nyo jitsu gon

7.  
Nō hotsu ichi nen ki ai shin  
Fu dan bon nō toku ne han  
Bon jō gyaku hō sai e nyū  
Nyo shu shi nyū kai ichi mi

8.  
Ses-shu shin kō jō shō go  
I nō sui ha mu myō an  
Ton nai shin zō shi un mu  
Jō-fu shin jitsu shin jin ten

9.  
Hi nyo nik-kō fu un mu  
Un mu shi ge myō-mu an  
Gyaku shin ken kyō dai kyō ki  
Soku ō chō zetsu go aku shu

10.  
Is-sai zen maku bon bu nin  
Mon shin nyo rai gu ze gan  
Butsu gon kō dai shō ge sha  
Ze nin myō fun da ri ke—

11.  
—mi da butsu hon gan nen butsu  
Ja ken kyō man aku shu jō  
Shin gyō ju ji jin ni nan  
Nan chū shi nan mu ka shi

12.



In do sai ten shi ron ge Chū ka ji-chi i - ki shi kō sō



Ken dai shō kō se shō i Myō nyo rai hon zei ō ki

13.



Sha-ka nyo rai ryō ga sen I shu gō myō nan ten jiku



Ryū-ju dai ji shut-to se Shi-tsu nō zai ha u mu ken

14.



Sen ze-tsu dai jō mu jō hō Shō kan gi ji shō an raku



Ken ji nan gyō ro-ku ro ku Shin gyō i gyō shi dō raku

15.



O-ku nen mi da bu-tsu hon gan Ji nen so - ku ji nyū hi-tsu jō



Yui nō jō shō nyo rai gō Ō hō dai hi gu zei on

16.

Tenjin bo satsu zō ron setsu  
 Ki myō mu ge kō nyo rai  
 E shu ta ra ken shin jitsu  
 Kō sen ō chō dai sei gan

17.

Kō-yu hon gan riki e kō  
 I do gun jō shō is-shin  
 Ki nyū ku doku dai hō kai  
 Hitsu gyaku nyū dai e shu shu

18.

Toku shi ren ge zō se kai  
 Soku shō shin nyo hos-shō jin  
 Yu bon nō rin gen jin zū  
 Nyū shō ji on ji ō ge

19.

Hon shi *Donran* ryō ten shi  
 Jō kō ran sho bo satsu rai  
 San zō ru shi ju jō kyō  
 Bon jō sen gyō ki raku hō

20.

Tenjin bo satsu ron chū ge  
 Hō do in ga ken sei gan  
 Ō gen ne kō yu ta riki  
 Shō jō shi in yui shin jin

21.

Waku zen bon bu shin jin potsu  
Shō-chi shō-ji soku ne han  
 His-shi mu ryō kō myō do  
Sho-u shu jō kai fu ke


22.

*Dōshaku* kes-shō dō nan shō  
 Yui myō jō do ka tsū nyū  
 Man zen ji riki hen gon shu  
 En man toku gō kan sen shō

23.


San-pu san shin ke on gon  
 Zo matsu hō metsu dō-hi in  
 Is-shō zō aku chi gu ze  
 Shi an nyō gai shō myō ka

24. Leader




Ze-n do-u do— ku myo-u bus-sho-u i—— i

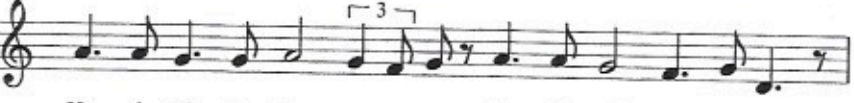
All



Ko-u-u a-a-i jo-u san yo gya-ku a-a-ku



Ko-u myo-u myo-o-u go-o-u ken in nen



Ka-i ni-u hon ga-a-n da-i chi ka-a-i

25.



Gyo - u ja sho - u ju ko - n go - u shi - i - n



Kyo-u-u ki - i i - chi nen so - u o - u go - o - o



Yo i da - a - i to - o - u gya - ku sa - n nin



So - ku sho - u hos - sho - o - u shi jo - u ra - a - ku

26.



Gen shin ko ka - i i - chi da - i ke - e - u



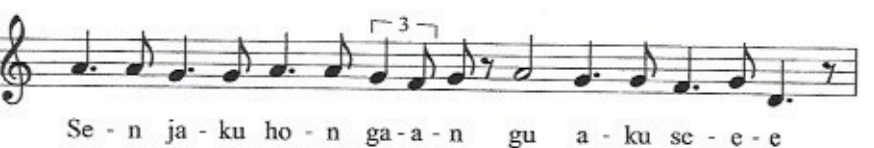
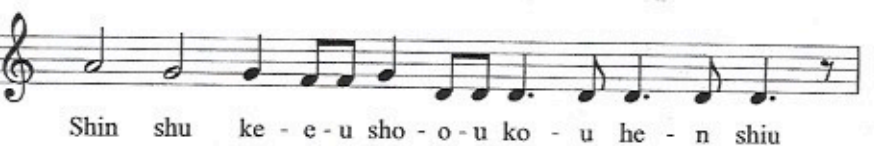
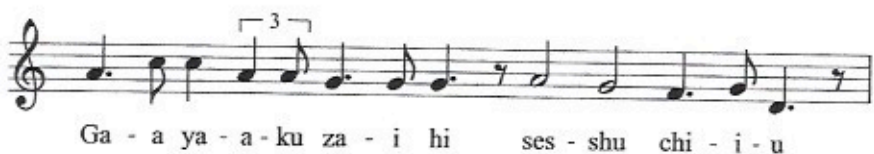
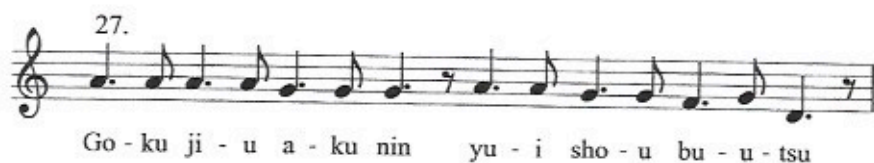
He - n - n ki - i a - n nyo ka - n i - sa - a - i



Sen zo - u shi - i - u shi - in ha - n se - n jin



Ho - u ke ni do - o - o sho - u be - n ri - i - u





Ge - n ra - i sho - u ji ri - n de - n ge - e - e



Ke - et - chi - i gi jou i sho shi - i - i



So - ku ni - u ja - a - ku jo - o - u mu i raku



Hit - chi shi - n ji - i - n i no - u ni - i - u



Gu kyo - u da - i ji shu shi to - o - u



Jo - u - u sa - a - i mu hen go - ku jo - ku a - a - ku



Do - u zo - ku ji - i shu - u gu do - u shin



Yu - i ka shin shi ko - u so - u se - e - tsu

NA MAN  
DA BU



EKO

Leader

All



Gan ni shi ku do - o - o ku - u      Byo-u do-u se i - is-sa-i



Do-u ho-tsu bo da - i shin      O - u jo-u a - n #ra - ak - ko