

Vandana Ti-Sarana

(Homage and Three Refuges)

Leader



Na - mo tas - sa Bha - ga - va - a - to



A-ra-ha - a - to Samm' - sam-bud - dhas - sa

Leader: 1st / All: 2nd



Bud - dham sa - ra - nam gac - cha - mi



Dham - mam sa - ra - nam gac - cha - mi



Sam - gham sa - ra - nam gac - cha - mi

Homage to Śākyamuni Buddha, the Blessed One, the Noble One, the Perfectly Awakened One.

I go to the Buddha for guidance.

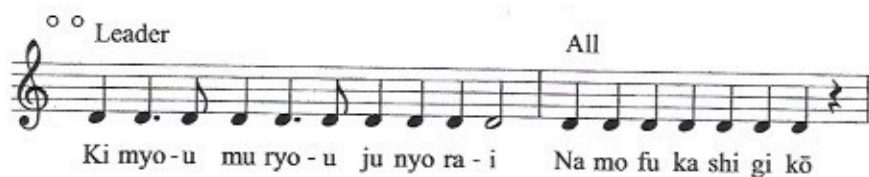
I go to the Dharma for guidance.

I go to the Sangha for guidance.

NAMO KIE BUTSU ↘
 NAMO KIE HO° ↗
 NAMO KIE SOO ↘

Shōshinge (正信偈)

Gyō-fu (行譜)



2.
To ken sho butsu jō do in
Koku do nin den shi zen maku
Kon ryū mu jō shu shō gan
Chō hotsu ke-u dai gu ze

3.
Go kō shi yui shi shō ju
Jū sei myō shō mon jip-pō
Fu hō mu ryō mu hen kō
Mu ge mu tai kō en nō

4.
Shō jō kan gi chi e kō
Fu dan nan ji mu shō kō
Chō nichī gakkō shō jin setsu
Is-sai gunjō mu kō shō

5.
Hon gan myō gō shō jō gō
Shi shin shin gyō gan ni in
Jō tō gaku shō dai ne han
His-shi metsu do gan jō ju

6.
Nyo rai shō-i kō shus-se
Yui setsu mi da hon gan kai
Go joku aku ji gun jō kai
Ō shin nyo rai nyo jitsu gon

7.
Nō hotsu ichi nen ki ai shin
Fu dan bon nō toku ne han
Bon jō gyaku hō sai e nyū
Nyo shu shi nyū kai ichi mi

8.
Ses-shu shin kō jō shō go
I nō sui ha mu myō an
Ton nai shin zō shi un mu
Jō-fu shin jitsu shin jin ten

9.
Hi nyo nik-kō fu un mu
Un mu shi ge myō-mu an
Gyaku shin ken kyō dai kyō ki
Soku ō chō zetsu go aku shu

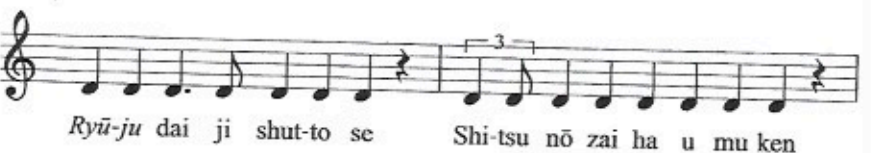
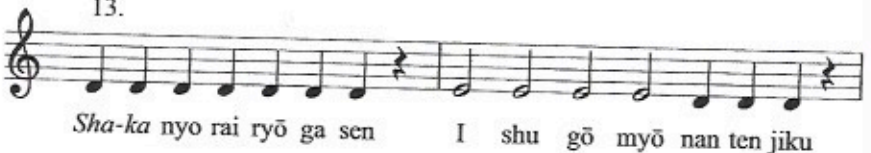
10.
Is-sai zen maku bon bu nin
Mon shin nyo rai gu ze gan
Butsu gon kō dai shō ge sha
Ze nin myō fun da ri ke—

11.
—mi da butsu hon gan nen butsu
Ja ken kyō man aku shu jō
Shin gyō ju ji jin ni nan
Nan chū shi nan mu ka shi

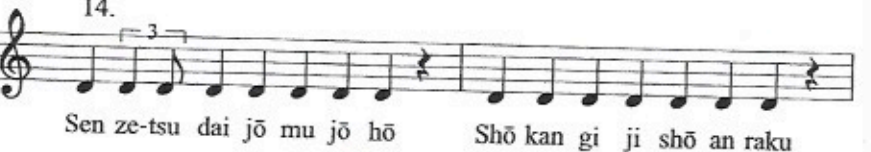
12.



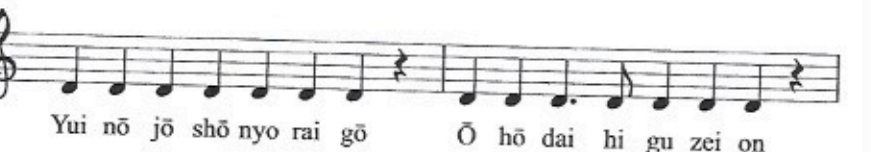
13.



14.



15.



16.
Tenjin bo satsu zō ron setsu
 Ki myō mu ge kō nyo rai
 E shu ta ra ken shin jitsu
 Kō sen ō chō dai sei gan

20.
 Tenjin bo satsu ron chū ge
 Hō do in ga ken sei gan
 Ō gen ne kō yu ta riki
 Shō jō shi in yui shin jin

17.
 Kō-yu hon gan riki e kō
 I do gun jō shō is-shin
 Ki nyū ku doku dai hō kai
 Hitsu gyaku nyū dai e shu shu

21.
 Waku zen bon bu shin jin potsu
 Shō-chi shō-ji soku ne han
 His-shi mu ryō kō myō do
 Sho-u shu jō kai fu ke

18.
 Toku shi ren ge zō se kai
 Soku shō shin nyo hos-shō jin
 Yu bon nō rin gen jin zū
 Nyū shō ji on ji ō ge

22.
 Dōshaku kes-shō dō nan shō
 Yui myō jō do ka tsū nyū
 Man zen ji riki hen gon shu
 En man toku gō kan sen shō

19.
 Hon shi *Donran* ryō ten shi
 Jō kō ran sho bo satsu rai
 San zō ru shi ju jō kyō
 Bon jō sen gyō ki raku hō

23.
 San-pu san shin ke on gon
 Zo matsu hō metsu dō-hi in
 Is-shō zō aku chi gu ze
 Shi an nyō gai shō myō ka



Ze-n do-u do— ku myo-u bus-sho-u i i



Ko-u-u a-a-i jo-u san yo gya-ku a-a-ku



Ko-u myo-u myo-o-u go-o-u ken in nen



Ka-i ni-u hon ga-a-n da-i chi ka-a-i

25.



Gyo - u ja sho - u ju ko - n go - u shi - i - n



Kyo-u-u ki - i i - chi nen so - u o - u go - o - o



Yo i da - a - i to - o - u gya - ku sa - n nin



So - ku sho - u hos - sho - o - u shi jo - u ra - a - ku

26.



Gen shin ko ka - i i - chi da - i ke - e - u



He - n - n ki - i a - n nyo ka - n i - sa - a - i



Sen zo - u shi - i - u shi - in ha - n se - n jin



Ho - u ke ni do - o - o sho - u be - n ri - i - u

27.



Go - ku ji - u a - ku nin yu - i sho - u bu - u - tsu



Ga - a ya - a - ku za - i hi ses - shu chi - i - u



Bon no - u sho - o - u ge - en su - i fu ken



Da - i hi mu ke - e - n jo - u se - u ga - a - a

28.



Ho - n shi Ge - n kū myo - u buk - ke - e - u



Re - n - n mi - n ze - n maku bon bu ni - i - n



Shin shu ke - e - u sho - o - u ko - u he - n shiu



Se - n ja - ku ho - n ga - a - n gu a - ku se - e - e

29.



Ge - n ra - i sho - u ji ri - n de - n ge - e - e



Ke - et - chi - i gi jou i sho shi - i - i



So - ku ni - u ja - a - ku jo - o - u mu i raku



Hit - chi shi - n ji - i - n i no - u ni - i - u

30.



Gu kyo - u da - i ji shu shi to - o - u



Jo - u - u sa - a - i mu hen go - ku jo - ku a - a - ku



Do - u zo - ku ji - i shu - u gu do - u shin



Yu - i ka shin shi ko - u so - u se - e - tsu

Nembutsu Wasan (念仏和讃)

Verses in Praise of Amida Buddha

Leader All

Na - mo a - mi - da - a - an bu Na - mo a - mi - da - a - an bu

Na - mo a - mi - da - n bu Na - mo a - mi - da - n bu

Na a - mo a - mi - da - a - an bu Na a - mo a - mi - da an bu Na

Leader 1

Mi da jo - u bu - tsu no Ko no ka ta wa - a - a

All

I ma ni - i jik - ko - u o - o He ta ma e ri

Ho - os - shi - n no ko - u ri - i - n Ki wa mo na ku

Se no mo - u myo - u o Te ra su na ri

**Leader 2****All****Leader**

All



Na - mo a - mi - da - n bu Na - mo a - mi - da - n bu



Na - mo a - mi - da - an bu u Na - mo a - mi - da - n bu



Na - mo a - mi - da - n bu Na - mo a - mi - da - a - an bu Na

Leader 3



Ge da - tsu no ko - u ri - n Ki wa mo na shi _____

All



Ko u so - ku ka mu ru - u Mo no wa mi na



U - u mu o ha na ru to No be ta mo o Byo - u do - u ka - ku ni



Ki myo - o se yo Na - mo a - mi - da - n bu



Na - mo a - mi - da - an bu u Na - mo a - mi - da - n bu



Leader 4

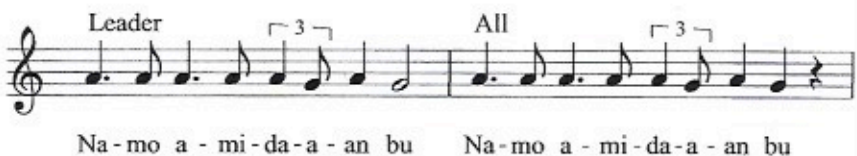


All



Leader

All





Na-mo a - mi-da-a - an bu Na-mo a - mi-da-a - an bu



Na a - mo a - mi - da an bu Na

Leader 5



Sho-u jo - u ko - o - o - u myo-u Na ra bi na shi

All



Gu shi-i ko-u no Yu e na re ba I-is-sa-i no gok-ke mo



No zo ko ri nu Hik-kyo-u e - e o Ki myo-o se yo



Na-mo a - mi-da-a - an bu Na-mo a - mi-da-a - an bu



Na-mo a - mi-da-a - an bu Na a-mo a - mi - da an bu Na

Leader 6



Bu u ko - u se - u e - u Sa - i da i i - chi

All



Ko - u e - n no - u but - to Na zu ke ta ri



Sa - n zu no ko - ku a - n Hi ra ku na ri



Da - i o - u gu - u o Ki myo - o se yo

Leader

All



Gan ni shi ku do - o - o ku - u Byo - u do - u se i - is - sa - i



Do - u ho - tsu bo da - i shin O - u jo - u a - n ra - ak - ko