

Shōshinge (正信偈)

Sō-fu (草譜)

○ ○ Leader All

Ki myo-u mu ryo-u ju nyo ra-i Na mo fu ka shi gi kō

Hō zō bo sa-tsu in ni ji Zai se ji zai ō bus-sho

2.

To ken sho bu-tsu jō do in Ko-ku do nin den shi zen maku

Kon ryū mu jō shu shō gan Chō ho-tsu ke u dai gu zei

3.
Go kō shi yui shi shō ju
Jū sei myō shō mon jip-pō
Fu hō mu ryō mu hen kō
Mu ge mu tai kō en nō

4.
Shō jō kan gi chi e kō
Fu dan nan ji mu shō kō
Chō nichī gakkō shō jin setsu
Is-sai gunjō mu kō shō

5.
Hon gan myō gō shō jō gō
Shi shin shin gyō gan ni in
Jō tō gaku shō dai ne han
His-shi metsu do gan jō ju

6.
Nyo rai sho-i kō shus-se
Yui setsu mi da hon gan kai
Go joku aku ji gun jō kai
Ō shin nyo rai nyo jitsu gon

7.
Nō hotsu ichi nen ki ai shin
Fu dan bon nō toku ne han
Bon jō gyaku hō sai e nyū
Nyo shu shi nyū kai ichi mi

8.
Ses-shu shin kō jō shō go
I nō sui ha mu myō an
Ton nai shin zō shi un mu
Jō-fu shin jitsu shin jin ten

9.
 Hi nyo nik-kō fu un mu
 Un mu shi ge myō-mu an
 Gyaku shin ken kyō dai kyō ki
 Soku ō chō zetsu go aku shu
10.
 Is-sai zen maku bon bu nin
 Mon shin nyo rai gu ze i gan
 Butsu gon kō dai shō ge sha
 Ze nin myō fun da ri ke—
11.
 —mi da butsu hon gan nen butsu
 Ja ken kyō man aku shu jō
 Shin gyō ju ji jin ni nan
 Nan chū shi nan mu ka shi
12.
 In do sai ten shi ron ge
Chū ka jichi iki shi kō sō
 Ken dai shō kō se shō i
 Myō nyo rai hon ze i ō ki
13.
Shaka nyo rai ryō ga sen
I shu gō myō nan ten jiku
Ryūju dai-ji shut-to se
 Shitsu nō zai ha u mu ken
14.
 Sen zetsu dai jō mu jō hō
 Shō kan gi ji shō an raku
 Ken ji nan gyō roku ro ku
 Shin gyō i gyō shi dō raku
15.
 Oku nen mi da butsu hon gan
Ji nen soku ji nyū hitsu jō
 Yui nō jō shō nyo rai gō
 Ō hō dai-hi gu ze i on
16.
Tenjin bo satsu zō ron setsu
 Ki myō mu ge kō nyo rai
 E shu ta ra ken shin jitsu
 Kō sen ō chō dai sei gan
17.
Kō-yu hon gan riki e kō
 I do gun jō shō is-shin
 Ki nyū ku doku dai hō kai
 Hitsu gyaku nyū dai e shu shu
18.
 Toku shi ren ge zō se kai
 Soku shō shin nyo hos-shō jin
 Yu bon nō rin gen jin zū
 Nyū shō ji on ji ō ge
19.
 Hon shi *Donran* ryō ten shi
 Jō kō ran sho bo satsu rai
 San zō ru shi ju jō kyō
 Bon jō sen gyō ki raku hō
20.
 Tenjin bo satsu ron chū ge
 Hō do in ga ken sei gan
 Ō gen ne kō yu ta riki
 Shō jō shi in yui shin jin
21.
 Waku zen bon bu shin jin potsu
Shō-chi shō-ji soku ne han
 His-shi mu ryō kō myō do
Sho-u shu jō kai fu ke
22.
Dōshaku kes-shō dō nan shō
 Yui myō jō do ka tsū nyū
 Man zen ji riki hen gon shu
 En man toku gō kan sen shō

27.



Go-ku jū a-ku nin yui shō butsu Ga ya-ku zai hi ses-shu chū



Bon nō shō gen sui fu ken Dai hi mu ken jō shō ga

28.



Hon shi Gen kū myō buk-kyō Ren min zen ma-ku bon bu nin



Shin shū kyō shō kō hen shū Sen ja-ku hon gan gu a-ku se

29.

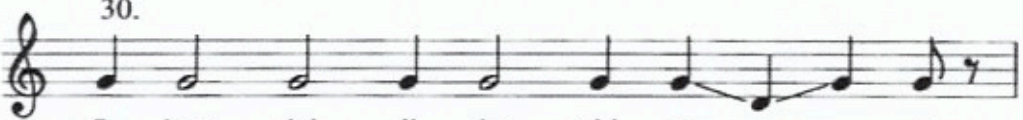


Gen rai shō ji rin den ge Ket-chi gi jō i sho shi

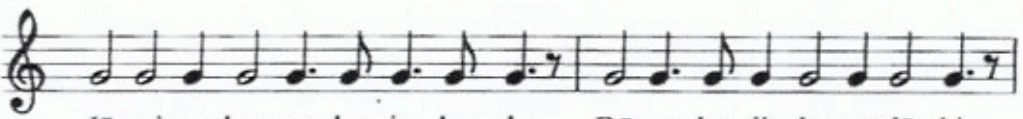


So-ku nyū ja-ku jō mu i raku Hit-chi shin jin i nō nyū

30.



Gu kyō dai ji shū shi to—— u



Jō sai mu hen go-ku jo-ku aku Dō zo-ku ji shu gu dō shin

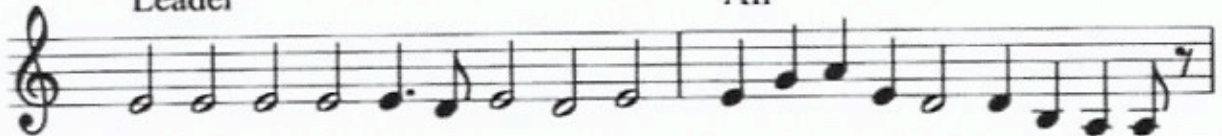


Yu - i ka shin shi ko - u so - u se - e - tsu

EKO

Leader

All



Gan ni shi ku do - o - o ku - u Byo-u do-u se i - is - sa - i

o o o



Do - u ho - tsu bo da - i shin O - u jo - u a - n #ra - ak - ko